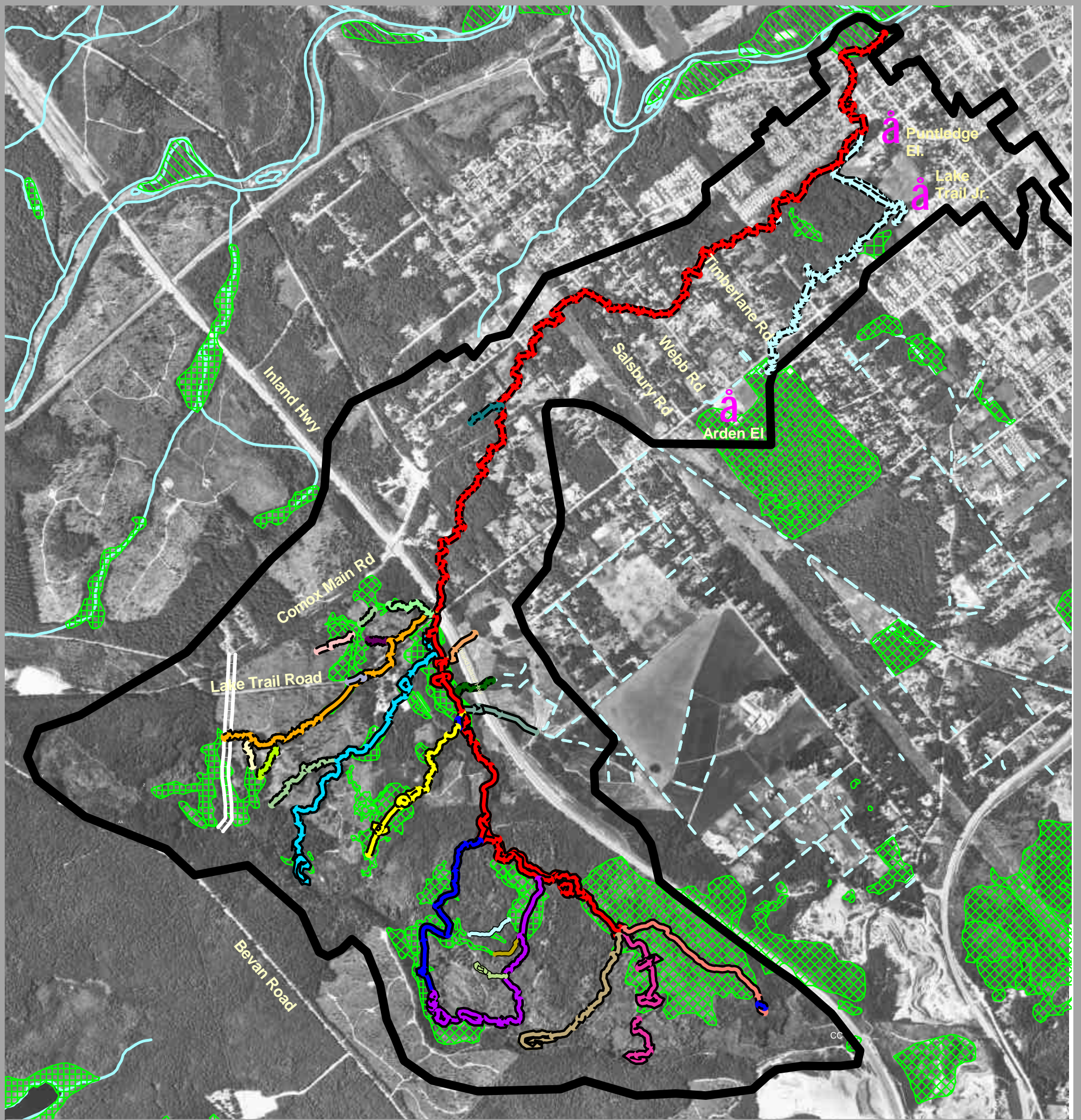
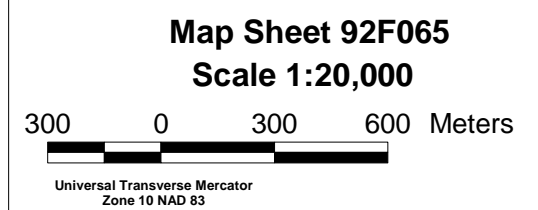
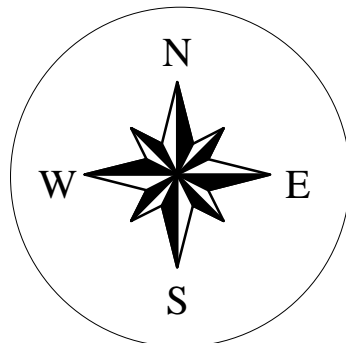


Morrison Creek Tributaries



Legend

- | | | | |
|--|--------------------------------------|--|-------------------------|
| | Morrison Main | | |
| | Arden Creek | | |
| | Morrison Tributary 2 | | |
| | Constructed A-1 | | |
| | First Supply Main | | |
| | First Supply Tributary A natural | | |
| | First Supply Tributary A-B | | |
| | First Supply Tributary A Constructed | | |
| | First Supply Tributary B | | |
| | First Supply Tributary C | | |
| | First Supply Tributary D | | |
| | First Supply Tributary E | | |
| | Nellie Creek | | |
| | Nellie Tributary A | | |
| | Morrison Tributary 5 | | Morrison Tributary 10-A |
| | Morrison Tributary 6 | | Morrison Tributary 10-B |
| | Morrison Tributary 7 | | Morrison Trib_12_A |
| | Morrison Tributary 8 | | Morrison Trib_12_A_1 |
| | Morrison Tributary 9 | | Morrison Trib 10_C |
| | Morrison Tributary 10 | | |
| | Morrison Tributary 11 | | |
| | Morrison Tributary 12 | | |
| | Morrison Tributary 13 | | |
- Stream (RDSCS Sensitive Habitat Atlas)
 Ditches
- Watershed Boundary
- Wetlands (Project Watershed)
- Wetlands (Sensitive Ecosystem Inventory)



This map was created by Comox Valley Project Watershed Society, using linework produced for utilization in the 2001 version of the Comox Strathcona Sensitive Habitat Atlas. The aerial photo used for this map was taken in 2002. Only portions of the Atlas are displayed on this map. To view a complete version of the Sensitive Habitat Atlas contact the Regional District of Comox Strathcona.

Project Watershed and its partners are not responsible for damages resulting from any omissions, deletion or errors.

Map created March 2003