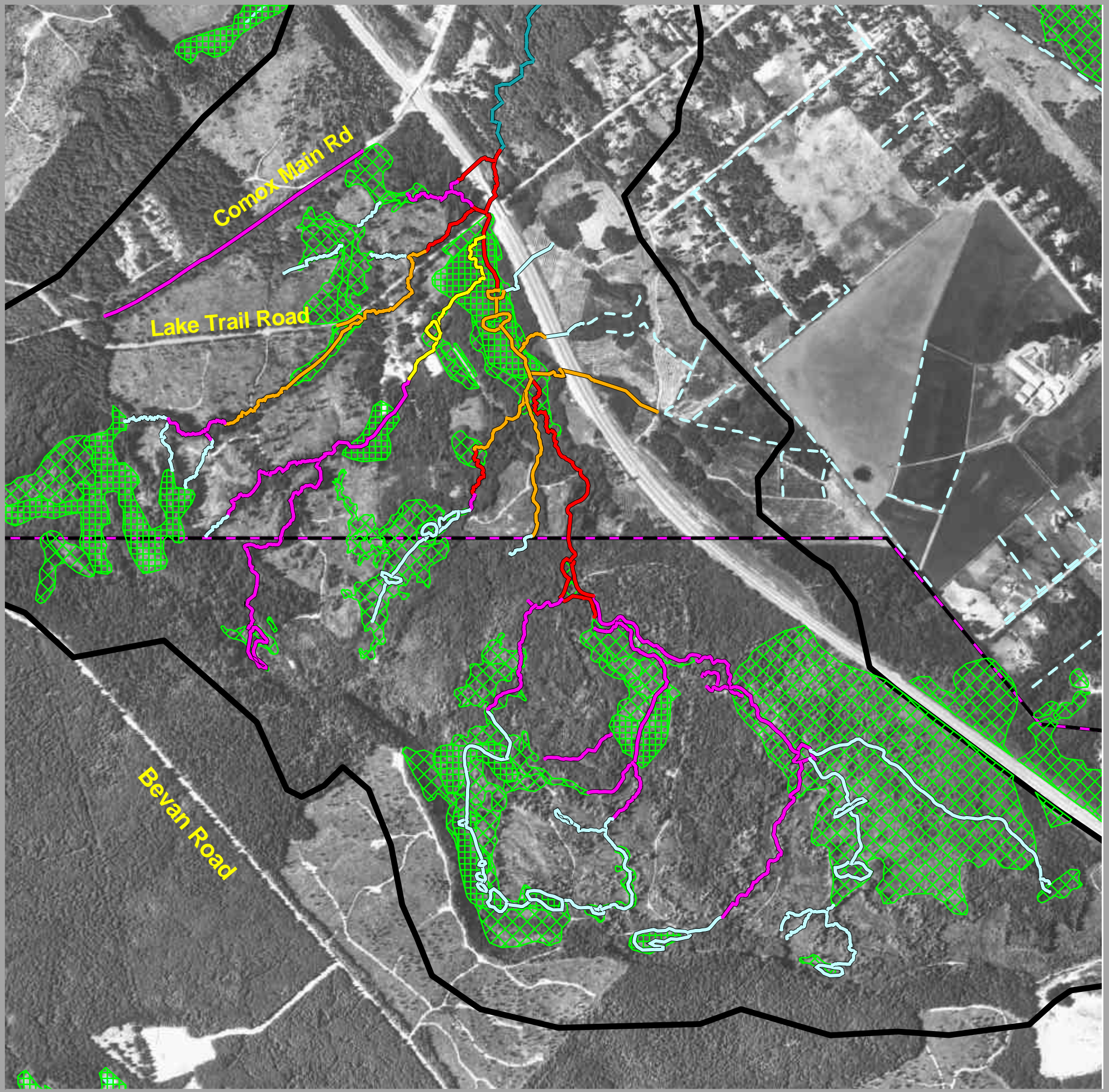


# Upper Morrison Creek

## Fish Species Distribution

### Southwest of the Inland Island Highway



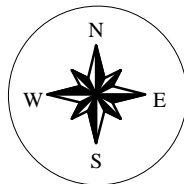
#### Legend

##### Fish Species Distribution

- not covered by this survey
- coho
- cutthroat trout
- coho & trout
- coho, trout, dolly varden
- unknown

- Stream (RDCS Sensitive Habitat Atlas)
- Ditches

- Watershed Boundary
- Wetlands (Project Watershed)
- Wetlands (Sensitive Ecosystem Inventory)



Fish species distribution is based on Mike Lough & Associates, Morrison Creek Fish Habitat Study conducted in 1994-1995, for the Ministry of Transportation and Highways. Presence or absence of juveniles was established using trapping and electrofishing. This map is an interpretation of this data and is therefore approximate in its representation of fish species distribution. To view complete details refer to Mike Lough's report: Morrison Creek Fish Habitat Study.



#### Map Sheet 92F065

Scale 1:12,000

200 0 200 400 Meters

Universal Transverse Mercator  
Zone 10 NAD 83

This map was created by Comox Valley Project Watershed Society, using linework produced for utilization in the 2003 version of the Comox Strathcona Sensitive Habitat Atlas. The aerial photo used for this map was taken in 2002. Only portions of the Atlas are displayed on this map. To view a complete version of the Sensitive Habitat Atlas contact the Regional District of Comox Strathcona.

Project Watershed and its partners are not responsible for damages resulting from any omissions, deletion or errors.

Map created March 2003